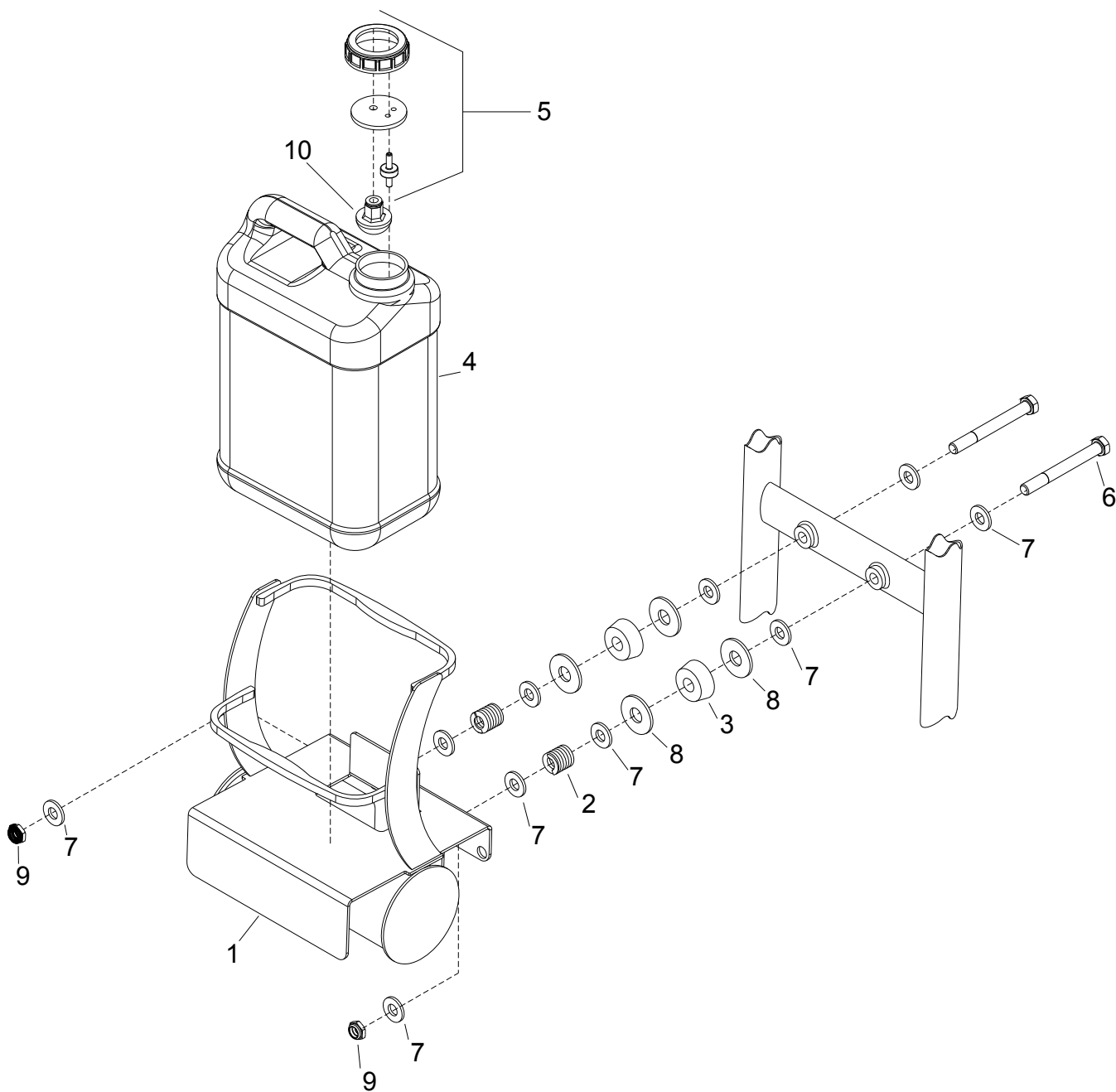


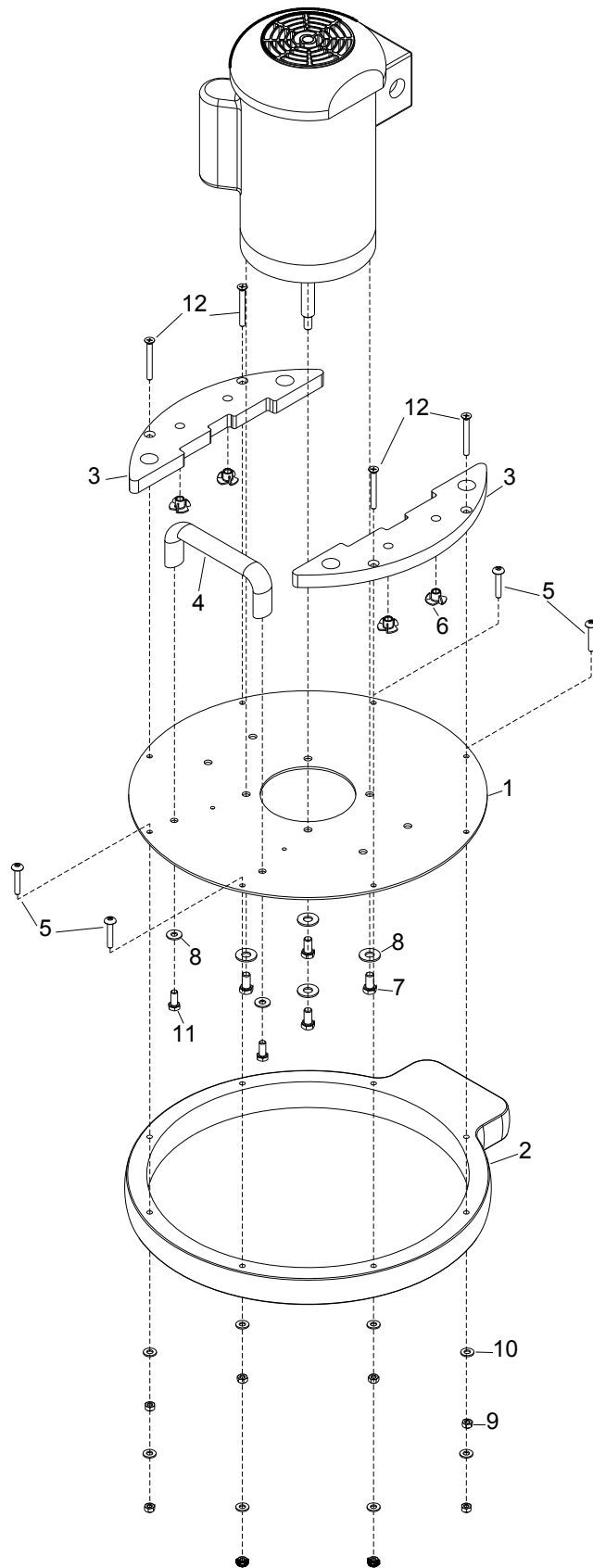
# **PARTS**

# Bottle Holder



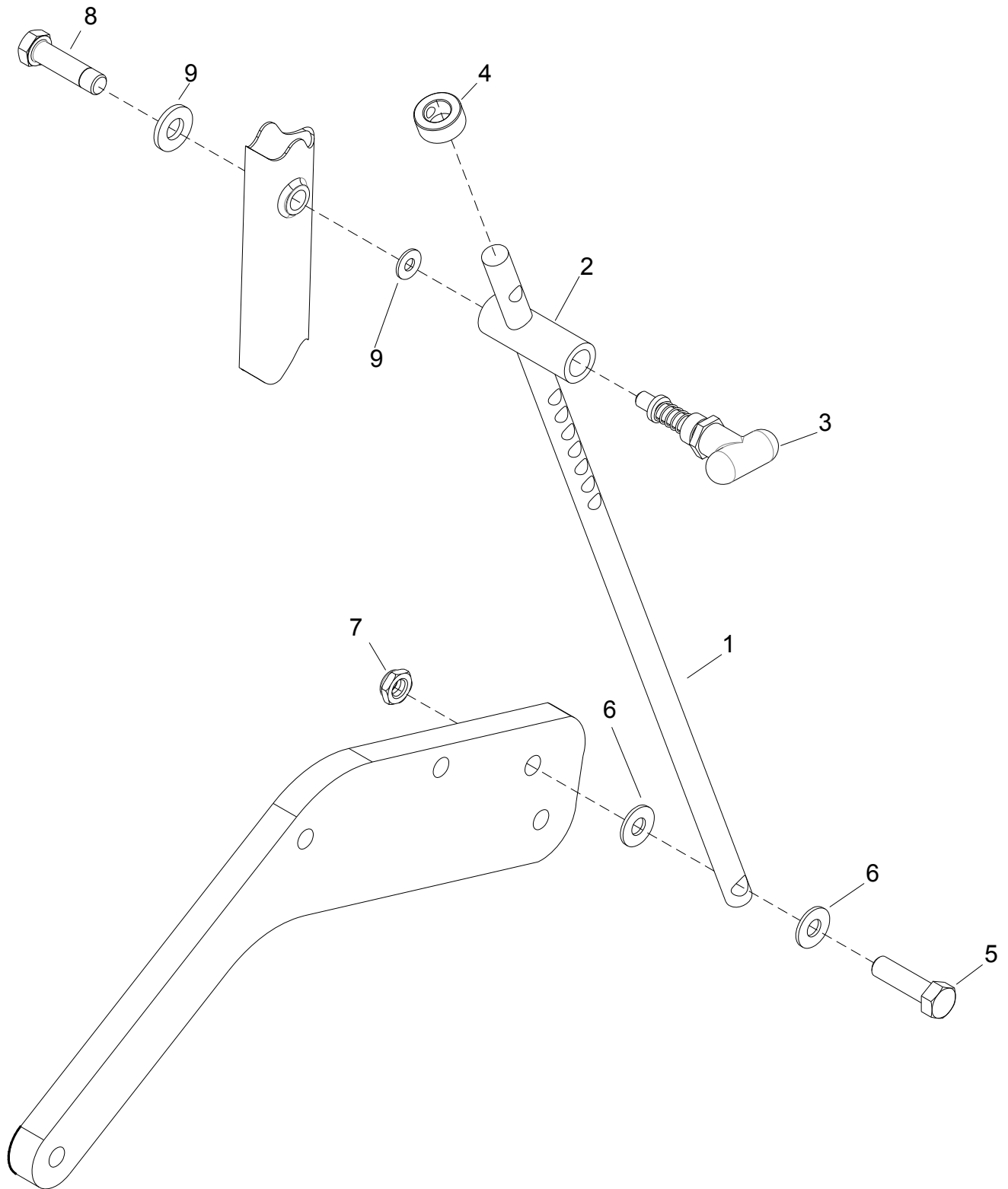
**Bottle Holder**

REF	PART NO.	QTY	DESCRIPTION	SERIAL NO. FROM	NOTES
1	2000	1	CAGE ASSY, BOTTLE HOLDER		
2	2024	2	SPRING, BOTTLE HOLDER		
3	2023	2	DAMPNER, RUBBER		
4	2019	1	BOTTLE, CARTRIDGE, 3 GAL		
5	2018	1	BOTTLE CAP, ASSY		
6	2020	2	SCREW, 1/2-13 X 4-3/8",HH, STL, ZNPLT		
7	2022	10	WASHER, NYLON, CAGE		
8	2021	4	WASHER, 5/8ID X 1-3/4OD X .134L, FLT, ZNPLT		
9	2025	2	NUT, 1/2-13 HEXTHIN NYLOCK STL ZNPLT		
10	2017	1	STRAINER, SOLUTION BOTTLE		



REF	PART NO.	QTY	DESCRIPTION	SERIAL NO. FROM	NOTES
1	3000	1	PLATE, MOTOR MOUNT		
2	3001	1	BUMPER SET		
3	3045-14	2	PLATE, BASE, WEIGHT		
4	3004	1	HANDLE, BASE		
5	3002	4	SCREW, 1/4-20 X 1-1/2", PHTRH,SS		
6	3045-06	4	NUT, 1/4-20 X 5/16, TEE, 4 PRONG, ZNPLT		
7	3034	4	SCREW,3/8-16 X 3/4",HH, STL, GRD8, YL, ZNPLT		
8	3035	6	WASHER, 3/8, FLAT		
9	3003	8	NUT, 1/4-20, HEX, LK, STL ZNPLT		
10	3003-02	8	WASHER, 1/4 ID X 5/8 OD, STL, PLT		
11	3006	2	SCREW, 5/16-18 X 3/4",HH, STL, ZNPLT		
12	3045-04	4	SCREW, 1/4-20 X 2-1/4", PHFLH, ZNPLT		

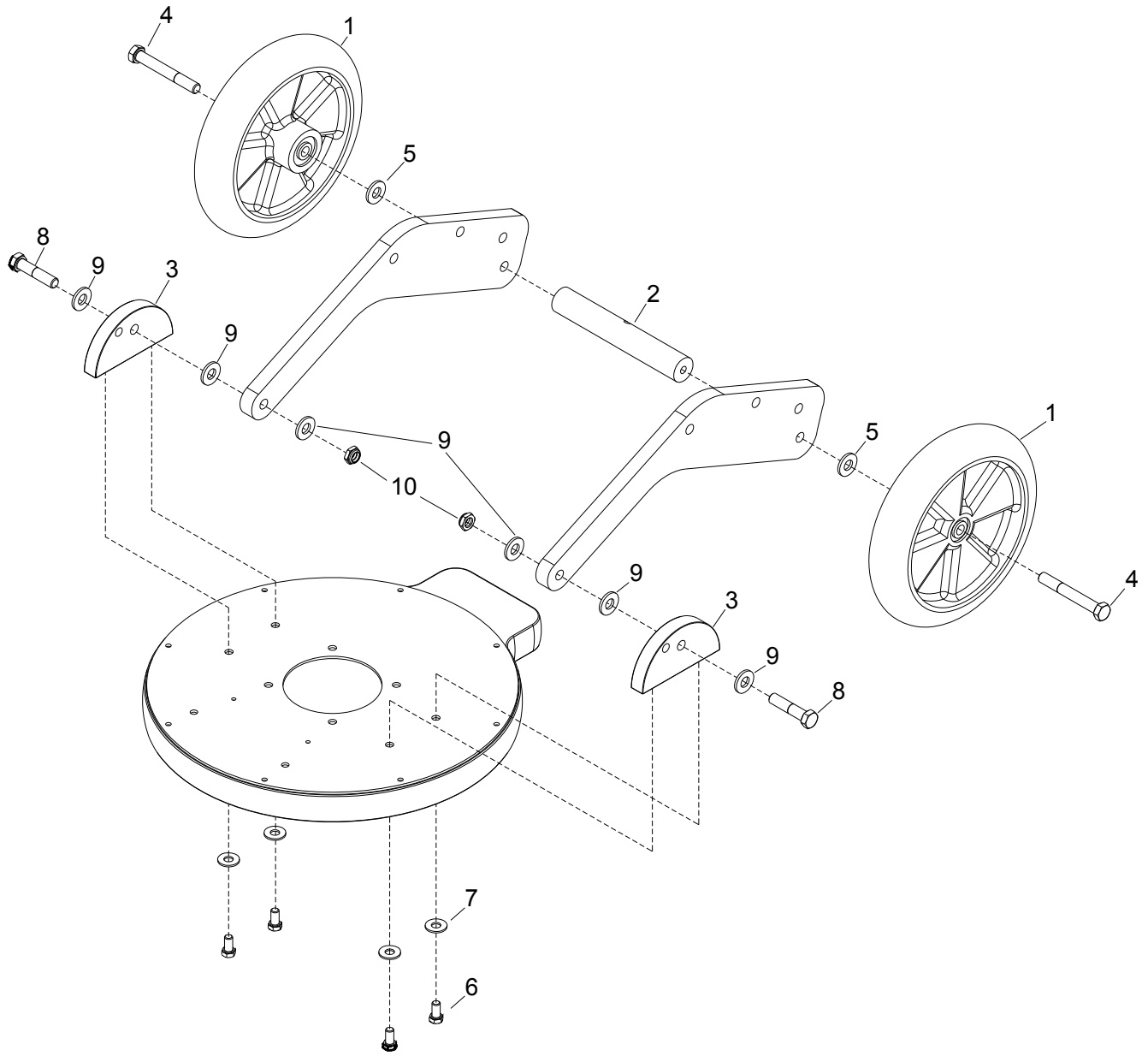
# Handle - Latch



**Handle - Latch**

REF	PART NO.	QTY	DESCRIPTION	SERIAL NO. FROM	NOTES
1	1026	1	ROD, HANDLE		
2	1022	1	LATCH BODY PULL		
3	1025	1	LATCH, PULL		
4	1027	1	COLLAR, HANDLE LATCH		
5	1028	1	SCREW, 1/2-13 X 1-3/4",HH, STL, ZNPLT		
6	1029	2	WASHER, NYLON, 1/2", LATCH		
7	1030	1	NUT, 1/2-13 HEXTHIN NYLOCK STL ZNPLT		
8	1023	1	SCREW, 1/2-13 X 2",HH, STL, ZNPLT		
9	1024	2	WASHER, NYLON, 1/2", LATCH MOUNT		

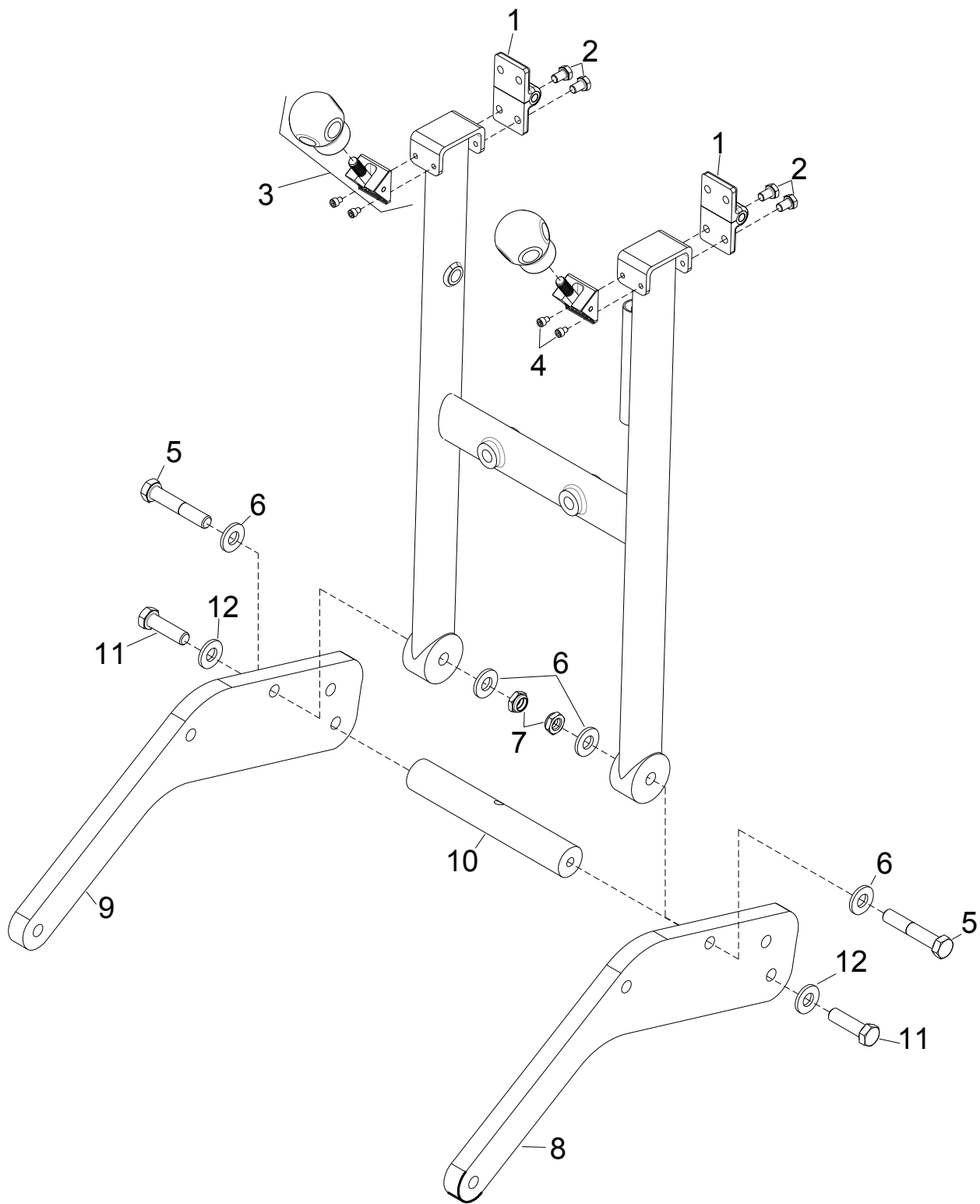
# Handle - Lower





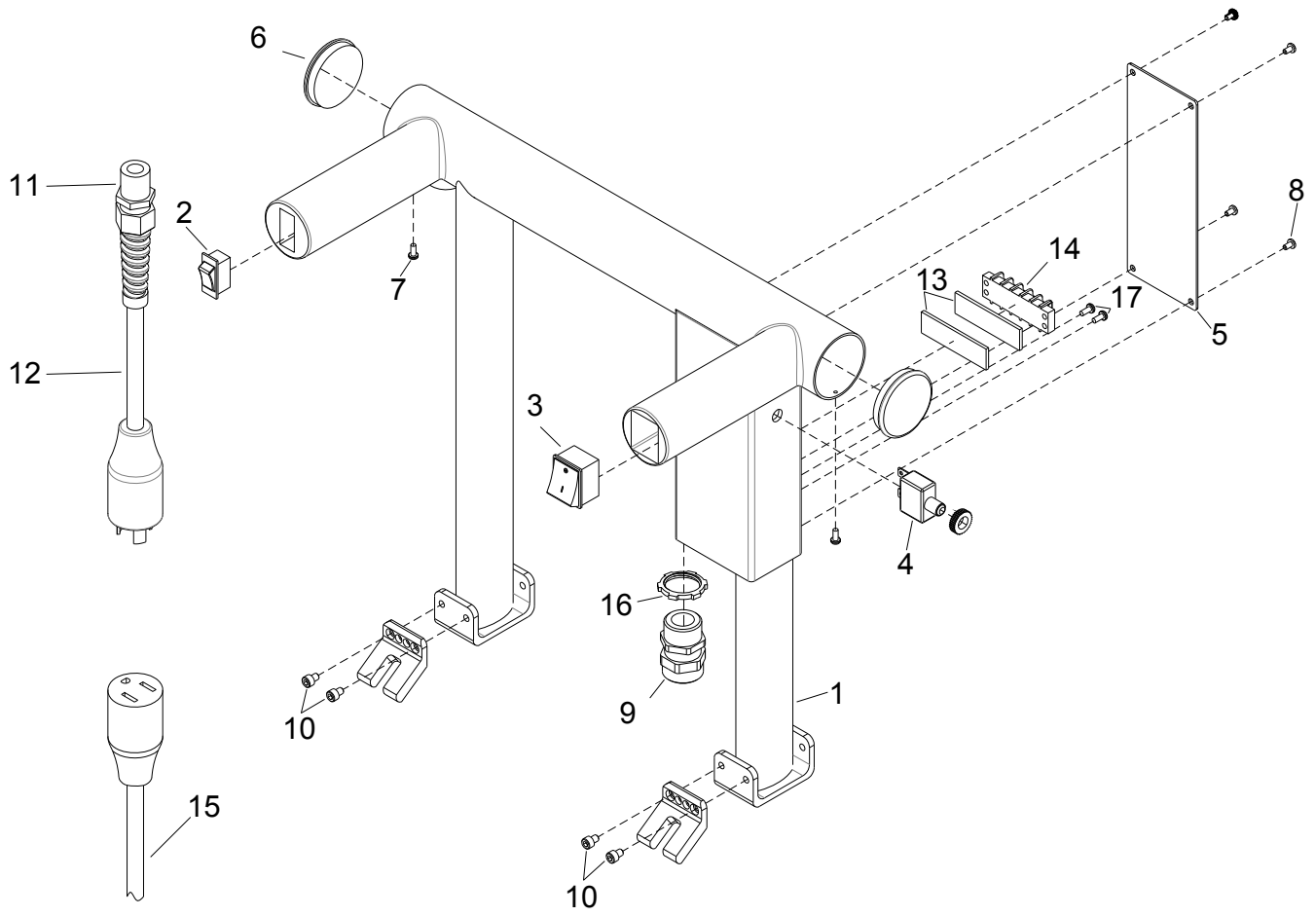
REF	PART NO.	QTY	DESCRIPTION	SERIAL NO. FROM	NOTES
1	4003	2	WHEEL, 10"		
2	4002	1	ROD, WHEEL		
3	3007	2	EARS, HANDLE, BASE PLATE		
4	4005	2	SCREW, 1/2-13 X 3-3/4",HH, STL, ZNPLT		
5	4004	2	WASHER, NYLON, WHEEL		
6	3034	4	SCREW,3/8-16 X 3/4",HH, STL, GRD8, YL, ZNPLT		
7	3008	4	WASHER, 3/8, FLAT		
8	4009	2	SCREW, 1/2-13 X 2-1/4",HH, STL, ZNPLT		
9	4010	6	WASHER, NYLON, ARMS TO EAR		
10	4011	2	NUT, 1/2-13 HEXTHIN NYLOCK STL ZNPLT		

**Handle - Middle**



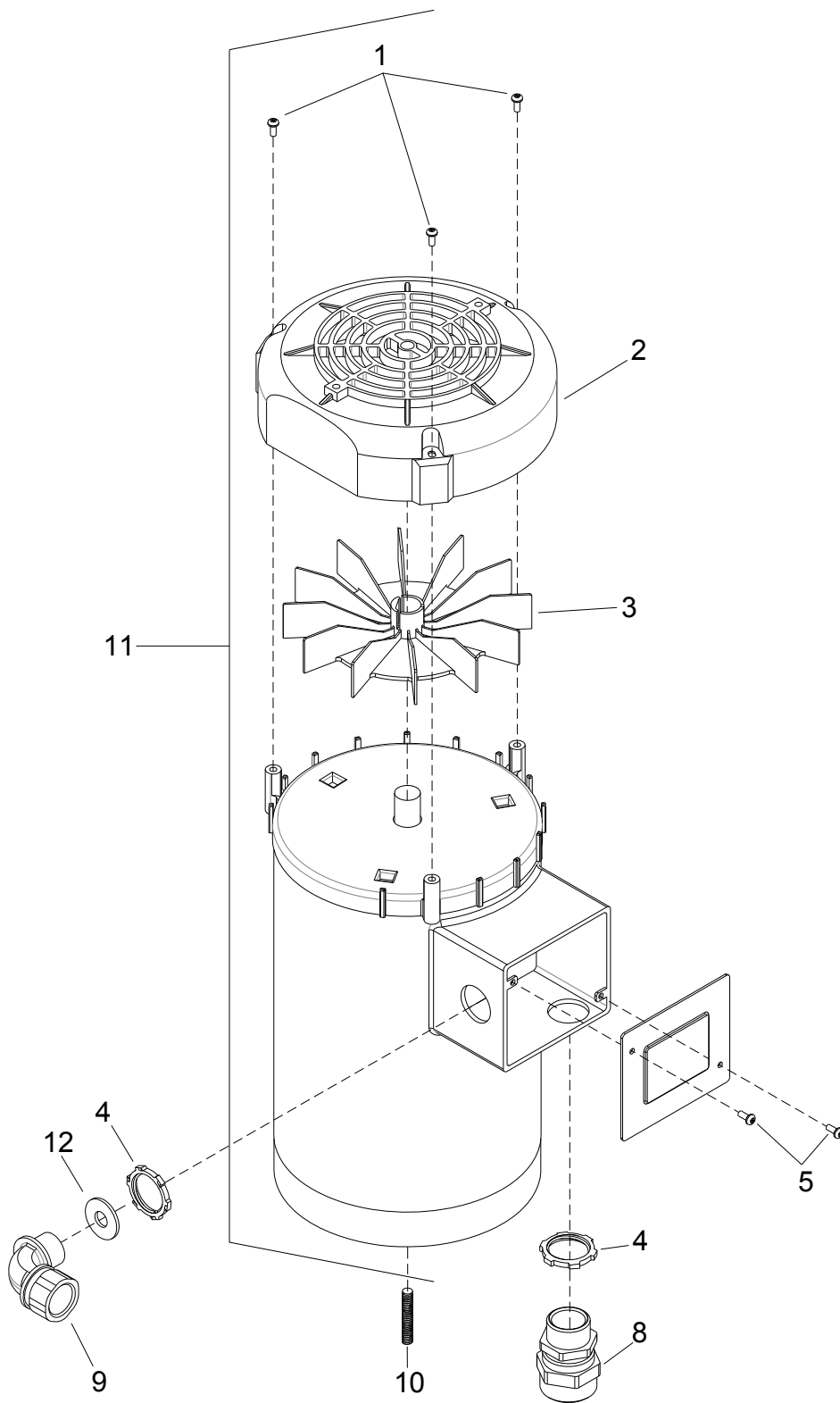
REF	PART NO.	QTY	DESCRIPTION	SERIAL NO. FROM	NOTES
1	1001	2	HINGE, HANDLE		
2	1002	8	SCREW, 5/16-24 X 1/2",HHMS, STL, ZNPLT		
3	1003-10	2	LATCH, LOWER ASM, HANDLE		
4	1003-12	4	SCREW, 10-32 X 1/4",SCHCS, STL, ZNPLT		
5	1019	2	SCREW, LOWER HANDLE		
6	1021	4	WASHER, NYLON		
7	1020	2	NUT, 1/2-13 HEXTHIN NYLOCK STL ZNPLT		
8	4001	1	PLATE, ARMS, LIFT, LH		
9	4000	1	PLATE, ARMS, LIFT RH		
10	4006	1	ROD, BRACE		
11	4008	2	SCREW, 1/2-13 X 2",HH, STL, ZNPLT		
12	4007	2	WASHER, NYLON, ARM SUPPORT		

# Handle - Upper



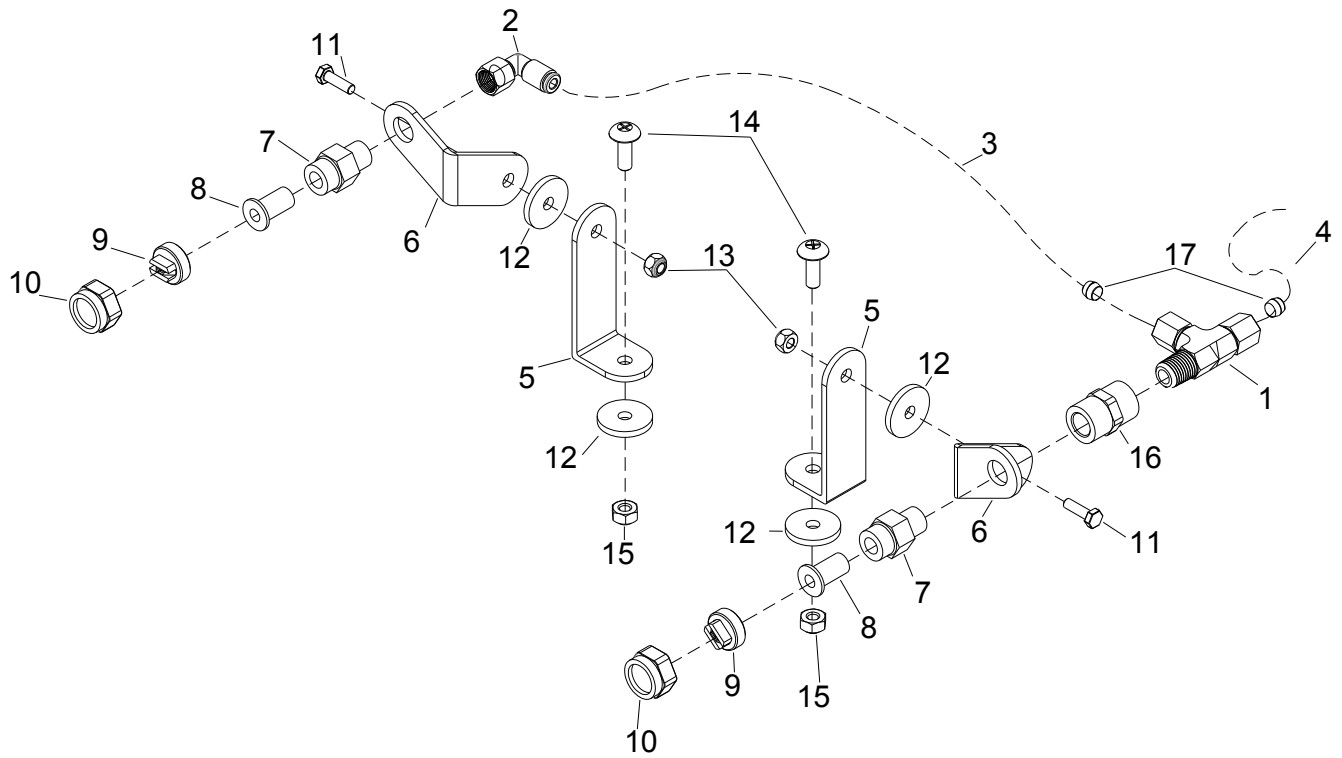
**Handle - Upper**

REF	PART NO.	QTY	DESCRIPTION	SERIAL NO. FROM	NOTES
1	1000-06U	1	HANDLE ASM, UPPER, W/ELEC BOX		
-	3028	1	HARNESS, MAIN HANDLE		NOT SHOWN
2	1007	1	SWITCH, DP, 2POS, ROCKER SPR		
-	1008	1	HARNESS, SPRAYER SWITCH		NOT SHOWN
3	1005-03	1	SWITCH, DP POS, ROCKER		
-	1006	1	HARNESS, ON/OFF SWITCH		NOT SHOWN
4	1010	1	BREAKER, 20A 125/250VAC 32VDC		
5	1011	1	PLATE, COVER, ELECTRICAL BOX		
6	1015	2	COVER, TUBE, HANDLE		
7	1016	2	SCREW, 6-20 X 3/8",PHPNH, STL, ZNPLT		
8	1012	4	SCREW, ELECT BOX		
9	1013	1	STRAIN RELIEF, ELEC BOX		
10	1003-12	4	SCREW, 10-32 X 1/4",SCHCS, STL, ZNPLT		
11	1018	1	STRAIN RELIEF, POWER CORD		
12	1017	1	POWER CORD, HANDLE		
13	1034	1	VELCRO, TERMINAL SWITCH		
14	1009	1	TERMINAL SWITCH		
15	1033	1	POWER CORD, 50' 110V		
16	1014	1	NUT, 1/2", CORD GRIP		
17	1032	2	SCREW, 8-32 X 3/8", SLTDHH, SS		



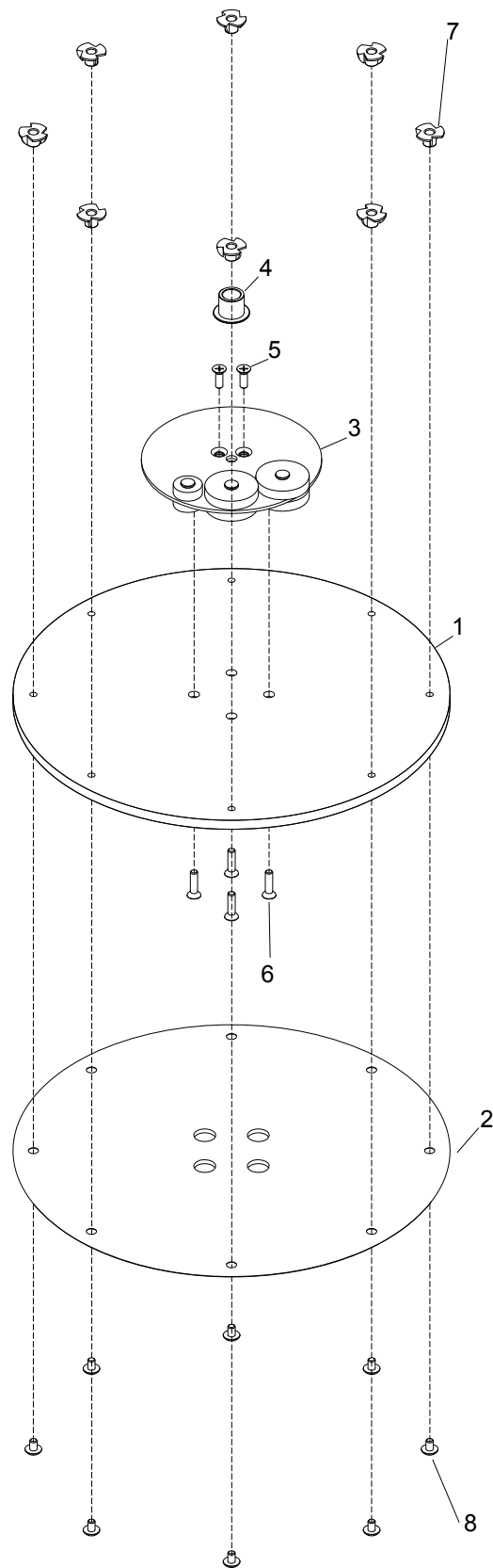
REF	PART NO.	QTY	DESCRIPTION	SERIAL NO. FROM	NOTES
1	3023-05	3	TBD		
2	3023-04	1	COVER, FAN MOTOR		
3	3023-03	1	FAN, MOTOR		
4	3030	2	NUT, 3/4", CONDUIT		
5	3023-06	2	SCREW, MOTOR LID		
6	3032	1	CORD, BLUE PLUG, 100-120V		NOT SHOWN
7	3033	1	CORD, BLACK PLUG, 100-120V		NOT SHOWN
8	3031	1	CORD GRIP, 3/4", MOTOR		
9	3029	1	CORD GRIP, 90 DEG, MOTOR		
10	3024	1	SCREW, 3/8-24 X 1-1/2" SCH, SET, BLKOX		
11	3023	1	MOTOR, 110/220V, 1750RPM		
12	3023-02	1	WASHER, CORD GRIP, SERRATED		

# Nozzle



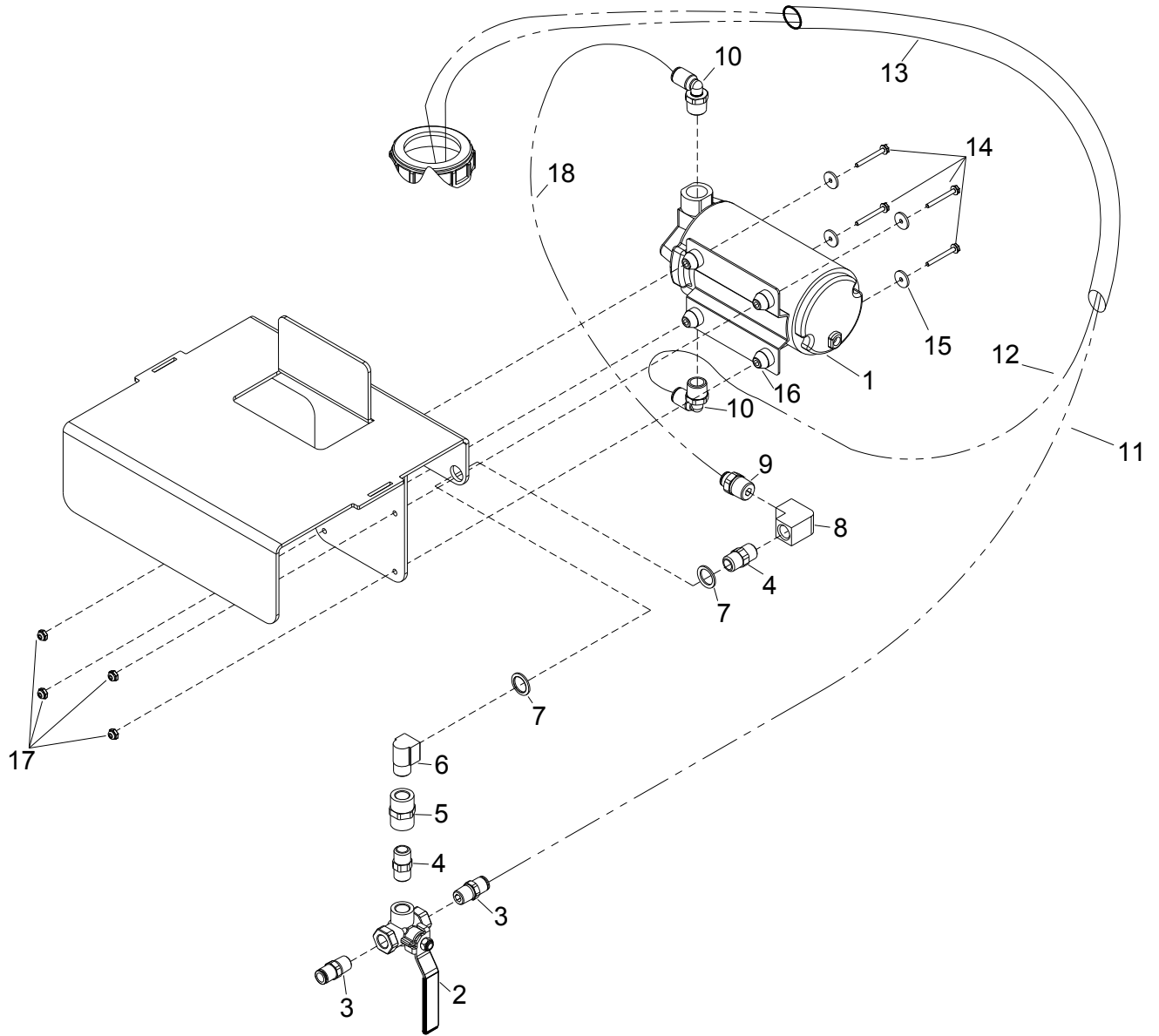


REF	PART NO.	QTY	DESCRIPTION	SERIAL NO. FROM	NOTES
1	3019	1	FITTING, TEE, SPRAY NOZZLES		
2	3021	1	FITTING, 90, SPRAY NOZZLES		
3	3022	1	HOSE, SPRAY NOZZLES		
4	3022-01	1	HOSE, SPRAY NOZZLES CAGE		
5	3009	2	PLATE, ANGLE, NOZZLE BASE		
6	3010	2	PLATE, ANGLE, NOZZLE		
7	3016	1	COUPLER, FILTER		
8	3015	2	STRAINER, CHECK VALVE		
9	3014	2	NOZZLE, SPRAYER		
10	3017	2	NOZZLE RETAINER		
11	3011	2	SCREW, 10-32 X 3/4", HXUNS, ZNPLT		
12	3013	2	WASHER, SPRAY JET ARM		
13	3012	2	NUT, 10-32 HEX NYLOCK STL GR2 ZNPLT		
14	3036	2	SCREW, 1/4-20 X 3/4", PHTRH, SS		
15	3037	2	NUT, 10-32 HEX NYLOCK STL GR2 ZNPLT		
16	3020	1	COUPLER, NOZZLE BASE PLATE		
17	3019-01	2	SLEEVE, COMPRESSION, CON		



REF	PART NO.	QTY	DESCRIPTION	SERIAL NO. FROM	NOTES
1	3038	1	DRIVER, DISK, 15"		
2	3040	1	DRIVER, VELCRO PLATE, 15"		
3	3026	1	ASSY, COUNTERWEIGHT, 17 DISK		
4	3025	1	SHAFT SUPPORT		
5	3026-17	2	SCREW, 1/4-20 X 3/4, PHFLHMS, SS		
6	3047	4	SCREW, 1/4-20 X 1", PHFLH, SS		
7	3043	8	NUT, 1/4-20 X 5/16, TEE, 4 PRONG, ZNPLT		
8	3042	8	SCREW, 1/4-20 X 3/8", PHTRH, SS		

# Solution



REF	PART NO.	QTY	DESCRIPTION	SERIAL NO. FROM	NOTES
1	2010	1	PUMP, 90PSI		
2	2008	1	VALVE, FLOW CONTROL, 3-WAY		
3	2008-01	2	COUPLER, QD, FLOW CONTROL		
4	2008-02	2	NIPPLE, 1/4", HEX		
5	2008-03	1	COUPLER, FLOW CONTROL		
6	2007	1	ELBOW, 1/4", 90		
7	2000-05	2	WASHER, 1/2ID X 3/4" OD, DSP, ZNPLT		
8	2008-04	1	FITTING, ELBOW, 1/4", 90		
9	2016	1	FITTING, GUEST, STRAIGHT		
10	2011	2	FITTING, GUEST, 90		
11	2015-01	1	HOSE, 1/4", BOTTLE CARTRIDGE		
12	2015	1	HOSE, 3/8", BOTTLE CARTRIDGE		
13	2015-02	1	HOSE, BOTTLE CARTRIDGE ASSY		
14	2012	4	SCREW, 6-32 X 1-1/4", HEXFLGH, ZNPLT		
15	2014	4	WASHER, PUMP MOUNT		
16	2010-02	4	GROMMET, DAMPNER, PUMP		
17	2013	4	NUT, 6-32, HEX NYLOCK STL ZNPLT		
18	2004	1	HOSE, 1/4", PUMP CAGE		